



Palazzoli
GROUP



THERMOPLASTIC JUNCTION BOXES

IP44/IP56 / IK08

- > Surface mounting boxes for electrical junctions
- > Available in 7 popular sizes (Including Round)
- > Manufactured from high quality self extinguishing ABS material
- > Supplied with External Wall Lugs & Weatherproof caps
- > Available in IP44 & IP56 Ingress Protection Rating (Selected Models)

Thermoplastic Junction Boxes

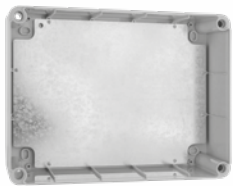
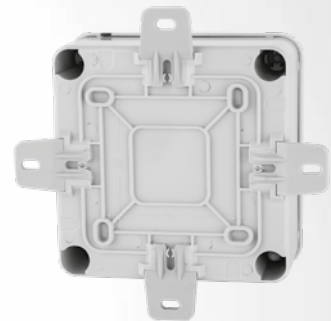
Range of robust Insulation class II ABS enclosures, available in IP44 & IP56 ingress protection, with an IK rating of IK08 with an operating temperature of -25°C to + 60°C. Glow Wire Tested to 650°C



➤ Rectangular boxes include raised screw slots for mounting terminals, mounting plates and other devices.

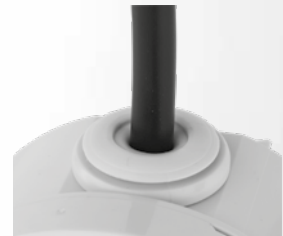
Covers are secured by either 1/4 turn fixings or captive threaded screw fixings and are affixed to the main enclosure via retention cords.

Supplied with optional fit external wall lugs with horizontal and vertical fixing screw slots for easy alignment.



➤ Mounting Plates are available for selected sizes.

Round Junction box includes 4 pierceable cable glands which grip cable and form around the cable to maintain ingress protection.



➤ Provision for Anti-tamper seal on cover screws.

Supplied with weatherproof caps to provide ingress protection for internal fixing holes.





Circular Junction Box

- Push fit cover with retention cord
- Supplied complete with optional fit external wall lugs
- Four easy pierce cable glands

Part Number	Internal Dimensions	IP Rating	IK Rating
791002	80 x 40mm	IP44	IK08

Rectangular Junction Boxes



- ¼ turn cover retention screws
- Cover Retention cords aid final installation
- Supplied complete with optional fit external wall lugs

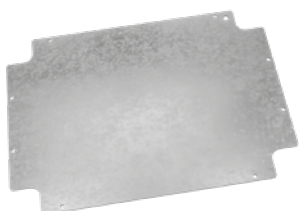
Part Number	Internal Dimensions	IP Rating	IK Rating
791234	100 x 100 x 50mm	IP56	IK08
791236	150 x 110 x 70mm	IP56	IK08



- 791207 Cover retention by ¼ turn fixing, heavy duty threaded screws on other boxes.
- Cover Retention cords aid final installation
- Supplied complete with optional fit external wall lugs
- Optional equipment mounting plate (galvanized steel) sold separately

Part Number	Internal Dimensions	IP Rating	IK Rating	Mounting Plate Part Number
791207	190 x 140 x 70mm	IP56	IK08	791615
791208	240 x 190 x 90mm	IP56	IK08	791616
791209	300 x 220 x 120mm	IP56	IK08	791617
791210	380 x 300 x 120mm	IP56	IK08	791618

Mounting Plates



- Optional Mounting plate for selected box sizes
- Made from Galvanized steel plate
- Supplied with fixing screws to securely mount into Junction Box

Part Number	Dimensions	Compatible Junction Box Part Number
791615	180 x 127mm	791207
791616	228 x 168mm	791208
791617	285 x 205mm	791209
791618	350 x 270mm	791210



Palazzoli
GROUP

For more information contact your
local Lewden Regional Sales Managers & agents

Rob Haworth
(+44) 7973 838465

Chris Smith
(+44) 7919 922910

Irvine Office
01376 336281

Core Electrical N.I
(+44) 028 9002 0066

Kate Knox
(+44) 7515 559 552

Jodie Williams
(+44) 7843 148215

Tony Howard
(+44) 7973 334647

Richard Cotton
(+44) 7399 521126

Tim Ketterer
(+44) 7557 655045

Lee Mallett
(+44) 7736 694876



SAFETY IS NOT A GAME



SCAN TO VIEW
THE LIST OF OUR
PLATINUM & GOLD
STOCKISTS FOR
FULL NATIONWIDE
COVERAGE.



SCAN TO ACCESS
CONTACT DETAILS
OF OUR SALES DESK
FOR ALL GENERAL
ENQUIRIES.

London South & South East

BN
BR
CR
CT
DA
GU
KT
ME
PO
RG
RH
SE
SL
SM
SO
SW
TN
TW
UB
EC
WC
W

Rob Haworth

London North & East Anglia

AL
CB
CM
CO
E
EN
HA
HP
IG
IP
LU
MK
N
NR
NW
RM
SG
SS
WD
WT

Tim Ketterer
& Lee Mallett

Northern Ireland

Core
Electrical BT

North

BB
BD
BL
CA
DH
DL
DN
HD
HG
HU
HX
L
LA
LS
M
NE
OL
PR
S
SK
TS
WA
WF
WN
YO
FY
SR

Kate Knox

South West

BA
BH
BS
DT
EX
GL
GY
JE
PL
SN
SP
TA
TQ
TR
OX

Chris Smith

Wales

CF
LD
LL
NP
SA
SY
CH
HR
CW

Jodie
Williams

Scotland

HS
IV
AB
PH
DD
PA
FK
KY
KA
G
EH
TD
KA
DG
IM

Irvine Office

Midlands

LN
NG
LE
NN
CV
B
DE
DY
ST
TF
WR
WS
VV

Tony Howard
& Richard
Cotton



LEWDEN LTD
Unit 4, Bradbury Drive,
Springwood Industrial Estate,
Braintree
Essex
CM7 2SD
Tel.: +44 (0) 1376 336 200
sales@lewden.co.uk



For instant access to technical support through
our team of expert engineers.

@LewdenHelp on **Twitter & Instagram**
for your technical Lewden Questions.



www.lewden.com

AMA57631