



Palazzoli
GROUP



THERMOPLASTIC JUNCTION BOXES

IP44/IP56* / IK08

- > Surface mounting boxes for electrical junctions
- > Available in 7 popular sizes (Including Round)
- > Manufactured from high quality self extinguishing ABS material
- > Supplied with External Wall Lugs & Weatherproof caps
- > Available in IP44 & IP56* Ingress Protection Rating (Selected Models)

*Depending on model.

Thermoplastic Junction Boxes

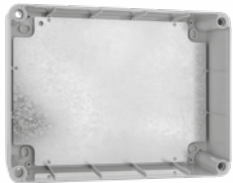
Range of robust Insulation class II ABS enclosures, available in IP44 & IP56* ingress protection, with an IK rating of IK08 with an operating temperature of -25°C to + 60°C. Glow Wire Tested to 650°C.

* Depending on model.



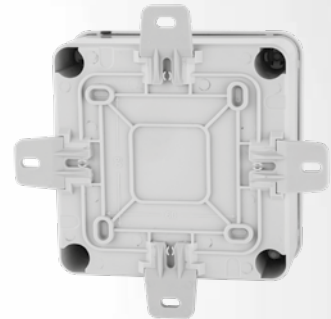
- Rectangular boxes include raised screw slots for mounting terminals, mounting plates and other devices.

Covers are secured by either ¼ turn fixings or captive threaded screw fixings and are affixed to the main enclosure via retention cords.



- Mounting Plates are available for selected sizes.

Supplied with optional fit external wall lugs with horizontal and vertical fixing screw slots for easy alignment.



- Round Junction box includes 4 pierceable cable glands which grip cable and form around the cable to maintain ingress protection.

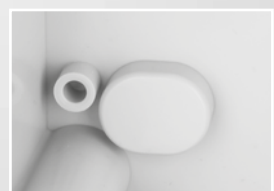
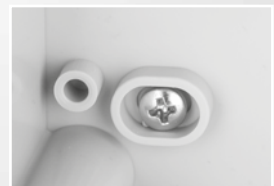


- Provision for Anti-tamper seal on cover screws.



Scan the QR code to view our entire range of Thermoplastic Junction Boxes

- Supplied with weatherproof caps to provide ingress protection for internal fixing holes.





Circular Junction Box

- Push fit cover with retention cord
- Supplied complete with optional fit external wall lugs
- Four easy pierce cable glands

Part Number	Internal Dimensions	IP Rating	IK Rating
791002	80 x 40mm	IP44	IK08

Rectangular Junction Boxes



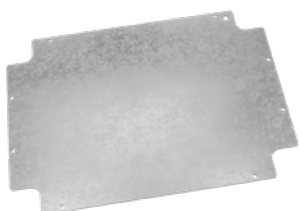
- ¼ turn cover retention screws
- Cover Retention cords aid final installation
- Supplied complete with optional fit external wall lugs

Part Number	Internal Dimensions	IP Rating	IK Rating
791234	100 x 100 x 50mm	IP56	IK08
791236	150 x 110 x 70mm	IP56	IK08



- 791207 Cover retention by ¼ turn fixing, heavy duty threaded screws on other boxes.
- Cover Retention cords aid final installation
- Supplied complete with optional fit external wall lugs
- Optional equipment mounting plate (galvanized steel) sold separately

Part Number	Internal Dimensions	IP Rating	IK Rating	Mounting Plate Part Number
791207	190 x 140 x 70mm	IP56	IK08	791615
791208	240 x 190 x 90mm	IP56	IK08	791616
791209	300 x 220 x 120mm	IP56	IK08	791617
791210	380 x 300 x 120mm	IP56	IK08	791618



Mounting Plates

- Optional Mounting plate for selected box sizes
- Made from Galvanized steel plate
- Supplied with fixing screws to securely mount into Junction Box

Part Number	Dimensions	Compatible Junction Box Part Number
791615	180 x 127mm	791207
791616	228 x 168mm	791208
791617	285 x 205mm	791209
791618	350 x 270mm	791210



Palazzoli
GROUP

For more information contact your
local Lewden Regional Sales Managers & agents

Chris Smith
(+44) 7919 922910
Core Electrical N.I.
(+44) 028 9002 0066
David Osbourne
(+44) 7471 657 078
Kate Knox
(+44) 7515 559 552

Iain Taggart
(+44) 7540 100 861
Lee Mallett
(+44) 7736 694876
Richard Cotton
(+44) 7399 521126
Ricky Hull
(+44) 7976 934 326

Tim Ketterer
(+44) 7557 655045
Tony Howard
(+44) 7973 334647



SAFETY IS NOT A GAME



SCAN TO VIEW
THE LIST OF OUR
PLATINUM & GOLD
STOCKISTS FOR
FULL NATIONWIDE
COVERAGE.



SCAN TO ACCESS
CONTACT DETAILS
OF OUR SALES DESK
FOR ALL GENERAL
ENQUIRIES.

Midlands	North	South West & Wales	London South & South East	London North & East Anglia	Scotland
CV	BB	BA	BN	AL	DD
DE	BD	BH	BR	CB	DG
DN	BL	BS	CR	CM	EH
DY	CA	CF	CT	CO	FK
LE	CH	DT	DA	E	G
LN	CW	EX	EC	EN	HAS
NG	DH	GL	GU	HA	IM
NN	DL	GY	KT	HP	IV
ST	FY	HR	ME	IG	KA
SY	HD	JE	PO	IP	KW
TF	HG	NP	PO	LU	KY
WR	HU	OX	RG	MK	ML
WS	HX	PL	RH	N	PA
WV	L	SA	SE	NR	PH
	LA	SN	SL	NW	TD
	LL	SP	SM	RM	ZE
	LS	TA	SO	SG	
	M	TQ	SW	SS	
	NE	TR	TN	WD	
	OL		TW		
	PR		UB		
	S		W		
	SK		WC		
	SR				
	TS				
	WA				
	WF				
	WN				
	YO				

Northern
Ireland

Core
Electrical BT

Kate
Knox

Chris
Smith

Ricky
Hull

David
Osbourne

Lee
Mallett

Tim
Ketterer

Iain
Taggart



LEWDEN LTD
Unit 4, Bradbury Drive,
Springwood Industrial Estate,
Braintree
Essex
CM7 2SD
Tel.: +44 (0) 1376 336 200
sales@lewden.co.uk



For instant access to technical support through
our team of expert engineers.

@LewdenHelp on **Twitter** & **Instagram**
for your technical Lewden Questions.



www.lewden.com

AMA57631 - S1